



**GOVERNMENT OF KERALA**

## **DEPARTMENT OF MINING AND GEOLOGY**



### **ADMINISTRATION REPORT 2006-07**

**DIRECTORATE OF MINING AND GEOLOGY  
KESAVADASAPURAM  
PATTOM PALACE P. O.  
THIRUVANANTHAPURAM - 695 004  
[www.dmg.kerala.gov.in](http://www.dmg.kerala.gov.in)**



GOVERNMENT OF KERALA  
INDUSTRIES (A) DEPARTMENT

G.O.(P) No. 75/08/ID.

Dated, Thiruvananthapuram, 11th June 2008.

**Abstract:**—Industries Department—Department of Mining & Geology—Administration Report for the year 2006-2007—Reviewed—Orders issued.

**Read:**—Lr. No. 1260/T3/2007 dated 17-5-2008 from the Director of Mining & Geology, Thiruvananthapuram.

ORDER

The Administration Report of the Department of Mining & Geology for the year 2006-07 has been reviewed.

2. The Department of Mining & Geology has dual roles to perform, viz.:

(i) Exploration and Prospecting for Mineral Deposits.

(ii) Implementation of Mines and Minerals Act and Rules.

3. The above two functions are handled by the following divisions of the Department namely (1) Exploratory and Prospecting Division (2) Mineral Development and Mining Leases Division.

4. During the period under review, investigation programmes for China Clay was taken up by the Department in Thiruvananthapuram, Kollam and Kasargod Districts. At Sasthavattom area in Thiruvananthapuram District a total meterage of 94.75 metres were drilled in 3 boreholes. The thickness of clay bed is found to be ranging from 12 metres to 16 metres, 5 boreholes were drilled to a cumulative depth of 154.50 metres in Mulavana area and 3 boreholes were drilled to a cumulative depth of 81 metres at Kundara area in Kollam District. 3 boreholes were drilled to a cumulative depth of 80.5 metres at Ernakulam area, 155.50 metres were drilled in 4 boreholes at Paivalika Area, 5 boreholes were drilled to a cumulative depth of 212 metres at Kommungal padavu area and 4 boreholes were drilled to a depth of 93 metres at Moonu Road-Malpacherry Area in Kasargod District.

5. Application for the Grant/Renewal of prospecting licenses, Mining Leases and reconnaissance permit on major minerals were recommended to Government by Mineral Development and Mining Lease Division. Two units of the Kerala Mineral Squad are attached to the Mineral Development and Mining Lease Division. Kerala Mineral Squad (Northern Region) have detected 236 cases of unauthorized transaction of minerals and were compounded by realizing a total sum of Rs. 14,06,000. The Southern Squad detected 316 cases of illegal mining and clandestine movement of mineral and realized Rs. 22,10,000 by way of compounding.

6. During 2006-07 a total amount of Rs. 26,46,82,963 has been collected by the Department as revenue. Total expenditure of the Department during the year 2006-07 amount to Rs. 416.06 lakhs.

7. The functioning of the Department of Mining & Geology during the period under review was satisfactory. The full text of the report is annexed.

By order of the Governor,

T. BALAKRISHNAN,  
Principal Secretary to Government.

## **List of Appendices**

## **Appendix**

- |     |  |   |
|-----|--|---|
| 1.  | Organization Chart of Department of Mining and Geology                     | A |
| 2.  | Statement showing Performance of the Subordinate Offices                   | B |
| 3.  | List of Mining Lease holders during 2006-07                                | C |
| 4.  | Abstract of Mining Lease in force during 2006-07                           | D |
| 5.  | Production & Sales statement for Bauxite for 2006-07                       | E |
| 6.  | Production & Sales statement for china clay during 2006-07                 | F |
| 7.  | Production & Sales statement for lime shell during 2006-07                 | G |
| 8.  | Production & Consumption statement for limestone during 2006-07            | H |
| 9.  | Production, Sales & Consumption statement for Mineral sands during 2004-05 | I |
| 10. | Production & Sales statement for Dimension stones during 2006-07           | J |
| 11. | Abstract of quarrying lease for Minor Minerals for 2006-07                 | K |
| 12. | Abstract of quarrying permits for Minor Minerals 2006-07                   | L |
| 13. | Abstract of Dealers License holders for 2006-07                            | M |
| 14. | Demand, Collection and Balance statement for 2006-07                       | N |
| 15. | List of Officers of this Dept. deputed for various Training Programmes     | O |

# ADMINISTRATION REPORT OF THE DEPARTMENT OF MINING AND GEOLOGY FOR THE YEAR 2006-07

- |   |  |
|---|--|
| 1. Minister for Industries  | <b>Sri Elamaram Kareem</b>   |
| 2. Principal Secretary to<br>Government, Industries<br>Department | <b>Sri T. Balakrishnan, IAS.</b>   |
| 3. Joint Secretary, Industries<br>Department                      | <b>Sri R. Prakasan</b>   |
| 4. Director of Mining & Geology                                   | <b>Sri N. Krishnakumar</b><br>(01-12-2002 to 31-07-2006 A. N.)<br><br><b>Sri K. L. Krishnamoorthy</b><br>(Director in charge from 31-07-2006 A. N.)                      |
| 5. Deputy Directors   | <b>Sri M. Janardhanan</b><br>(From 01-04-2006 to 30-06-2006 A. N.)<br><br><b>Sri C. Vasudeva</b><br>(From 07-07-2006)<br><br><b>Sri M. Krishnan</b><br>(From 29-03-2007) |
| 6. Administrative Officer   | <b>Smt. A. Rajakumari</b>  |

## Part I

### 1.0 ADMINISTRATIVE SET UP

The Department of Mining and Geology has dual roles to perform viz.:

1. Exploration and Prospecting for Mineral Deposits.
2. Implementation of Mines and Minerals Act and Rules.

The above two functions are handled by the following division :-

1. Exploratory and Prospecting Division.
2. Mineral Development and Mining Lease Division.

A chart showing the organizational set up of the Department is provided in the Appendix A. A brief note on the functions and activities of the two divisions are furnished below:

#### 1.1 EXPLORATORY AND PROSPECTING DIVISION

This Division implements mineral exploration programmes approved by the State Geological Programming Board. Apart from the above, this division also takes up investigation programmes of urgent nature for the benefit of the mineral based industries in the state and for the general public as per the directions of Government from time to time.

The first step of the activity of this Division is to carry out the reconnaissance survey and preliminary geological surveys including pitting and trenching. Based on the results of these surveys, this division takes up detailed exploration such as drilling, sampling and preparation of contour map after conducting contour survey. The core samples collected during the investigation are subjected to chemical analysis and mineralogical tests in the well-equipped lab of the department. The data collected through such multidisciplinary activities will then be compiled to prepare detailed reports on each assignment. The reports so prepared are open for the mineral based industries in the State.

The Department has two laboratories viz.:

1. Analytical Laboratory and
2. Mineralogy and Gem Testing Laboratory.

Both the laboratories act as supporting units of the Exploratory and Prospecting Division.

#### **1.1.1. Analytical Laboratory**

Samples collected during the investigations are being analyzed in the laboratories. They include china clay, silica sand, graphite, bauxite, limestone, limeshell, stream sediments, rock samples etc. The laboratory also undertakes analysis and identification of samples brought by the public on payment basis.

#### **1.1.2. Mineralogy and Gem Testing Laboratory**

A number of precious stones were being identified and tested on payment basis in the gem testing laboratory brought by the public.

### **1.2. MINERAL DEVELOPMENT AND MINING LEASE DIVISION**

The main activity of this division is the implementation of various provisions of the Mines and Minerals (Development & Regulation) Act, 1957, the Mineral Concession Rules, 1960, the Mineral Conservation and Development Rules, 1988, the Kerala Minor Mineral Concession Rules, 1967 and the Granite Conservation and Development Rules, 1999. This function is being executed through 14 District Offices, Special Office at Cherthala and two Kerala Mineral Squads (Southern & Northern Region).

**1.2.1. Audit Wing:**— The audit wing is attached to the mineral development and mining leases division. Systematic annual audit of accounts in respect of collection of royalty, dead rent, surface rent etc. of various mineral concessions are the prime functions of this wing.

**1.2.2. Training:**— The duties of this Department are mainly technical in nature. Hence the officers of this department are imparted with training in the field of mineral exploration and administration of mines, in organization like Geological survey of India and the Indian Bureau of Mines. To improve the administrative and technical capability of the officers adequate training is also being provided through the Institute of Management in Government.

## **PART II**

### **3.0. TEXT OF THE ADMINISTRATION REPORT**

#### **3.1. Functions and Activities**

A brief review of the work carried out by the Exploratory and Prospecting Division and Mineral Development and Mining Lease Division during 2006-07 is enumerated:

#### **3.2. Exploratory and Prospecting Division**

##### **3.2.1. Investigation for China Clay**

##### **3.2.1a. Thiruvananthapuram District**

Based on the request from M/s. Ashapura Minechem Ltd., Mumbai Department had undertaken a drilling programme at Sasthavattom area on payment basis. A total meterage of 94.75 metres were drilled in 3 boreholes. The thickness of clay bed is found to be ranging from 12 metres to 16 metres. The borehole log details and the core samples were transferred to M/s. Ashapura for further studies.

##### **3.2.1b. Kollam District**

##### **1. MULAVANA AREA**

Based on the request of M/s. Kerala Ceramics Ltd., Kundara the detailed investigation programme in Mulavana area was continued this year also. In total 5 boreholes were drilled to a cumulative depth of 154.50 metres during the year under report. The cumulative drilling achieved in Mulavana area since its beginning of the investigation from 12 boreholes is 313.20 metres. A tentative reserve of 0.9 million tonne of China clay is estimated in Mulavana area.

## 2. KUNDARA AREA

The detailed investigation for China clay was undertaken adjacent to mine area of M/s. Kerala Ceramics Ltd., Kundara. A total 3 boreholes were drilled to a cumulative depth of 81 metres. The average thickness of clay horizon is 9 metres. A tentative reserve of 0.45 lakh metric tonne of China clay is estimated in this area.



Fig. 1. Core log

### 3.2.1c. Kasaragod District

#### 1. ERIKULAM AREA

The detailed investigation for China clay was continued at Erikulam area. 3 boreholes were drilled to a cumulative depth of 80.5 metres. The target fixed for Erikulam area was to drill 20 boreholes and this has been achieved by drilling a cumulative depth of 614.80 metres in 20 boreholes. The topographic survey was also being completed. The average thickness of the clay horizon is about 15 metres. About 24 million tonnes of China clay has been estimated over an area of 0.8 square kilometre. The drill set has been shifted to Moonu road to commence the investigation at Moonu road, Malpacherry area.

#### 2. PAIVALIKA AREA

Investigations for China clay in Paivalika area was continued and 155.50 metres were drilled in 4 boreholes. The target was to drill 10 boreholes in this area. This was achieved by drilling a cumulative depth of 355.40 metres in 10 boreholes. The topographic survey was completed. Average thickness of China clay in this area is 18 metres and estimated a reserve of about 14 million tonnes of China clay.

#### 3. KOMMUNGAL PADAVU AREA

Detailed exploratory drilling for locating China clay in this area was commenced on November 2006. 5 boreholes were drilled to a cumulative depth of 212 metres. The thickness of clay horizon is 12 to 20 metres and the inferred reserve is 4 million tonnes of China clay.

#### 4. MOONU ROAD—MALPACHERRY AREA

Detailed investigation for clay bearing area was started in December 2006. A total number of 4 boreholes were drilled to a cumulative depth of 93.00 metres and an inferred reserve of 2.5 million tonnes of China clay was estimated.

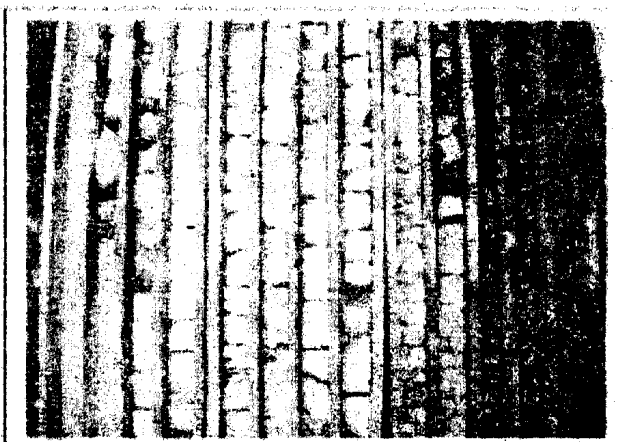


Fig. 2a. Drilling in progress at Kasaragod 2b. Core log.

### 3.2.2. Minor Mineral Quarry Mapping

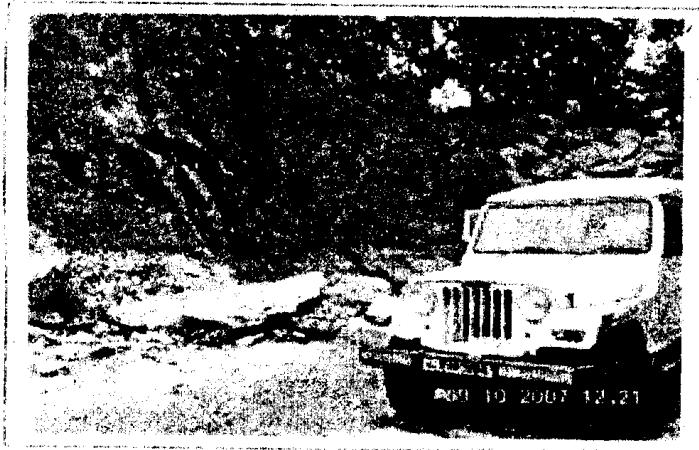
As per the recommendations of the Public Accounts Committee (1998-2000) of State Legislature, the Department had taken up a programme for Minor Mineral Quarry Mapping in all Districts of Kerala to prepare a database.

### 3.2.3. Kollam District

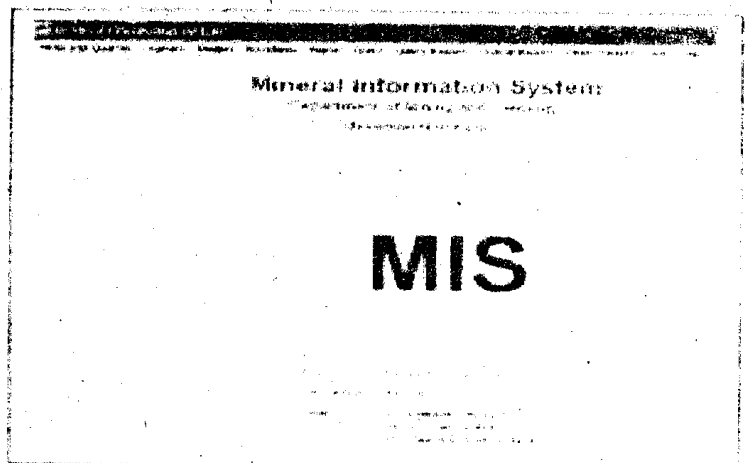
During 2006-07 Minor Mineral Quarrying Mapping in Kollam District was taken up and completed. During the survey 772 minor mineral quarries and 73 crusher units were surveyed and collected data covering 104 Villages in Kollam, Kottarakkara, Pathanapuram, Karunagappally and Kunnathur Taluks. Using G. P. S. Quarries and crusher units were located and marked in the topo sheets and a preliminary report has been prepared.

### 3.2.4. Thiruvananthapuram District

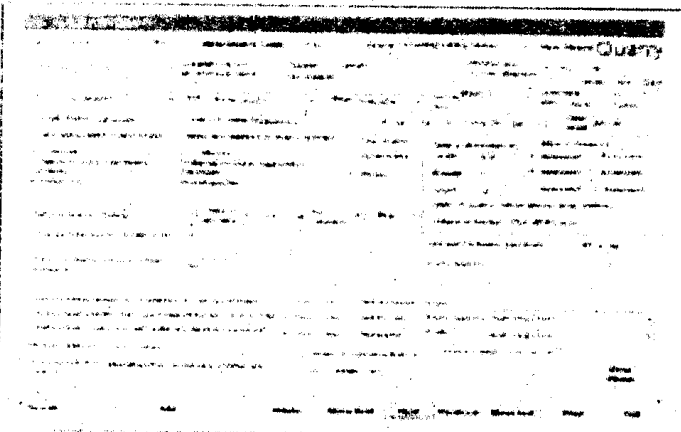
The survey for minor mineral quarries in Thiruvananthapuram District commenced during November 2006 and is being continued. During the survey 421 Minor Mineral Quarries (Granite Building Stone) and 29 crusher units were surveyed and collected data covering Thiruvananthapuram, Neyyattinkara and Nedumangad Taluks.



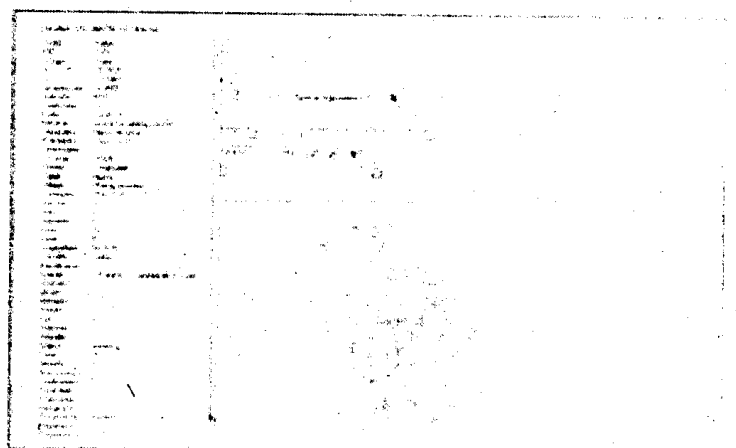
3a



3b



3c



3d

Fig. 3a Minor Mineral quarry data collection database

Fig. 3b, c and d Minor Mineral Quarry

### 3.2.5. Geotechnical and Environmental Division

- (a) A study was conducted on landslide occurrence in and around Nadapuram in Kozhikode District with emphasis on Pashukadavu landslip and a report was submitted to Government.
- (b) In connection with the categorization and collection of survey numbers of tile/brick clay bearing areas in Kozhikode District, a field inspection was conducted at Poolakode, Peruvanna, Olavanna, Cheruvannoor, Karuvanthuruthy, Ferok, Ramanattukara, Kunnamangalam of Kozhikode District.

3.2.2.(a) Environmental Impact Study was conducted in the proposed bauxite mining areas of M/s. Ashapura Minechem Ltd. in Sitangoli area of Kasaragod District along with Regional Research Laboratory, Thiruvananthapuram using Remote-sensing techniques.

3.2.2.(b) Based on the directions received from the Government, an Environmental Impact Study was conducted in Vattakkayal area of Sakthikulangara Village in Kollam District. A report was submitted to the Government, recommending for detailed study.

3.2.2.(c) A Report was prepared and submitted to the Government in connection with the notification of Survey Nos. of clay bearing areas from 38 villages of Thrissur District on the basis of request from the Central Kerala Tile Manufacturers Association.

3.2.2.(d) As a follow up action of mapping of paleo channels conducted jointly by Geological Survey of India and Department of Mining & Geology, a field work was carried out at Pamba basin to ascertain the feasibility of drilling to quantify the sand reserves.

3.2.2.(e) In association with the Regional Research Laboratory, a technical report has been prepared and submitted to the Government for approval in connection with the Environmental impact Assessment Study in the clay mining areas in Thiruvananthapuram District.

3.2.2.(f) Assessment of availability of river sand in Kulathupuzha river was carried out as requested by the Forest Department and a report was prepared and handed over to the Forest Department.

### 3.2.4. Preliminary Investigation to Demarcate the Landslide Prone areas in Idukki District

Based on the request from District Collector, Idukki the Department had undertaken a survey to demarcate the landslide prone areas in Idukki District and identified that Munnar, Devikulam, Cheruthoni, Elappara and nearby areas are landslide prone.

### 3.2.5. GIS Project

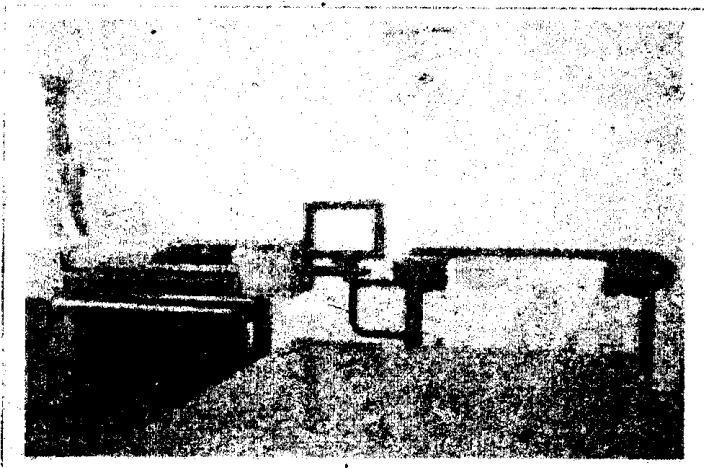
3.2.5.(a) Informations collected on the minor mineral by quarry mapping in the District of Ernakulam, Pathanamthitta, Palakkad and Idukki have been retrieved and converted into Excel Format and manipulated to suit the data to input the GIS Software. Thematic layers such as quarry/mine location, road and drainage network and land forms were generated using an evaluation version of Arc view software.

3.2.5.(b) Digital Gold concentration of Attappadi area of Palakkad District based on the data collected by the Department has been prepared.

3.2.5.(c) Preparation of digital map of Brick/Tile clay bearing area in Thrissur District and China clay bearing area at Vizhinjam area, Thiruvananthapuram District are in progress and digitization of the cadastral boundary map of Manglapuram-Thonnakkal area are in progress.

3.2.5.(d) The Department has procured all the hardwares such as plotter, scanner, and computer systems for the GIS Project.

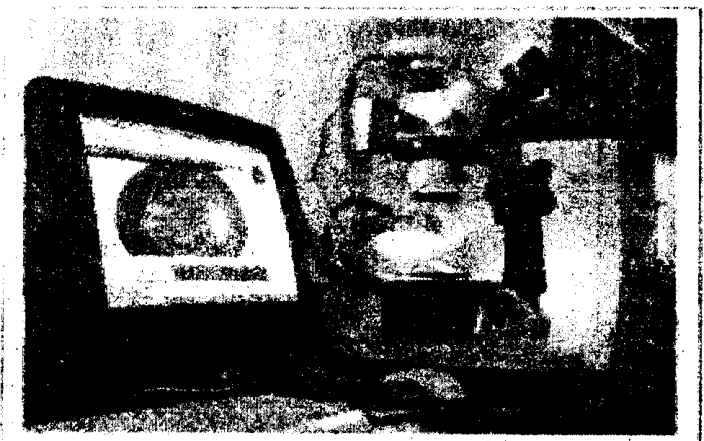




**Fig. 4a, 4b GIS Project**

### **3.2.6. Mineralogy and Gemmological Laboratory**

During the year under report the Gem Testing Lab of the department had identified 2586 gemstones/synthetic stones and issued certificates. An amount of Rs.5,03,360 was collected by way of testing fee. There is 13% increase of revenue compared to the previous year. Also carried out petrographic studies and prepared thin sections on payment basis.



**Fig. 5a, 5b Mineralogy and Gemmological Laboratory**

### **3.2.7. Analytical Laboratory**

During the period a total of 283 china clay samples were collected for the investigation of China clay from different parts of the State and were analysed in the Chemical Laboratory for LOI,  $\text{SiO}_2$ ,  $\text{Fe}_2\text{O}_3$ ,  $\text{TiO}_2$ ,  $\text{Al}_2\text{O}_3$ ,  $\text{CaO}$ , and  $\text{MgO}$ . Apart from this 2 Silica sand, 5 Laterite, 17 Bauxite and one Bentonite samples were also analysed. 2 Alloy samples were analysed to detect the presence of Copper, Lead, Silver, Gold, Chromium, Manganese and Zinc. Silica Sand and Bentonite samples were analysed on payment basis.



**Fig. 6a, 6b Analytical Laboratory**

### 3.3. MINERAL DEVELOPMENT AND MINING LEASE DIVISION

The main functions of this division are summarized below:

Application for the grant/renewal of prospecting licenses, mining leases and reconnaissance permit on major minerals were recommended to Government.

Quarrying leases, quarrying permits and dealer's licences and registration of crusher units in respect of minor minerals were granted/renewed. Inspection of mines and quarries and enforcement of relevant provision of rules by virtue of powers vested under the Mines and Minerals (Development & Regulation) Act, 1957, Mineral Concession Rules, 1960 the Mineral Conservation and Development Rules, 1988, the Kerala Minor Mineral Concession Rules, 1967 and the Granite Conservation and Development Rules, 1999 are regulated by the Mining Lease Division.

Under this division 14 District Offices, one Special Office and 2 Kerala Mineral Squads are functioning for the effective implementation of the provision of above said Act and Rules and the collection of revenue of both major and minor minerals, curbing of illegal mining and clandestine movement of mineral, attending to the court cases in connection with mining and movement of minerals, collection of data on Production, Sales/Consumption of Major and Minor Minerals and furnishing of required information to Government of India, Indian Bureau of mines and other Central/State agencies.

One of the main functions of this Division is the administration of the Kerala Minor Mineral Concession Rules, 1967. Certain officers/authorities of other Department/local bodies such as Revenue, Panchayath, Forest and Municipal Administration were also continued to function as "Competent Authority" as declared by the Government to administer the rules in their respective areas of Jurisdiction.

The Director of Mining and Géology continues to be the sole competent authority for lime shell and Granite Dimension Stones. In accordance with the Government notification No. 32010/L2/93/ID dated 22-06-1995; the Director of Mining and Geology is empowered to grant quarrying permit for all minor minerals, where the royalty exceeds Rs. 20,000 and as per G.O. (Ms.) No. 19/2002 dated 28-02-2002 registration of metal crusher units under consolidated royalty payment system. Director of Mining & Geology has also been declared as the sole competent authority in the State to grant/renew quarrying permits for lime shell and quarrying leases for minor minerals. Most of the quarries for minor minerals are operating in small scale. In order to alleviate the problems faced by such quarry operators the Geologists of all the District Offices have been empowered to grant/renew quarrying permits for which the royalty does not exceed Rs. 20,000 except for lime shell and dimension stones. Besides the sub offices are empowered to issue/renew Dealer's License and also execute the quarrying leases, issue movement permits for both major and minor minerals within their respective area of jurisdiction.

#### 3.3.1. Achievements

This Division continued to implement effectively the provisions of the Mines & Minerals (Development & Regulation) Act, 1957 and the rules made thereunder. Mineral concessions for major minerals were issued in accordance with the provisions in the said Act and the Mineral Concession Rules, 1960. Mineral Concessions for minor minerals are sanctioned as per the Kerala Minor Concession Rules, 1967. The various mineral concessions in force as on 31-03-2007 are detailed below:

**A. Details of Mining Lease in force as on 31-03-2007  
(Mineral wise)**

Sl. No.	Name of Mineral	No. of lease
1.	Bauxite	5
2.	Lime Stone	1
3.	Mineral Sand	2
4.	Quartz	2
5.	China Clay	39
6.	Lime Shell	5
7.	Silica Sand	26
8.	Laterite	5
9.	Graphite	2
10.	Reconnaissance Permit	1
Total		88

**B. Details on Mineral Concessions Granted in respect of  
Major and Minor Minerals**

Number of quarrying permits	15751
Number of quarrying leases including Dimension stone	361
Dealer's Licence	829
Registered Metal Crusher	83
Prospecting Licence (Major Mineral)	15
Reconnaissance Permit	1
Mining Lease	87

**C. Revenue Collection for the last Five years**

Year	Major Mineral	Minor Mineral	Total (Rs.)
2000-01	5,42,68,566	10,92,10,196	16,34,78,762
2001-02	4,82,40,167	10,93,33,104	15,75,73,271
2002-03	4,99,57,852	13,41,36,119	18,87,38,690
2003-04	4,46,51,539	13,94,80,327	18,41,31,866
2004-05	6,56,97,896	13,77,30,315	20,24,28,211
2005-06	7,33,48,437	16,26,74,348	23,60,22,785
2006-07	6,54,24,712	19,92,58,251	26,46,82,963

**3.3.2. Kerala Mineral Squad**

Two Units of Kerala Mineral Squad are attached to Mineral Development and Mining lease Division. Kerala Mineral Squads (Northern Region and Southern Region) were established with the prime intention of curbing illegal mining and clandestine movement of minerals on the basis of the provisions in the Mines and Minerals (Development & Regulation) Act, 1957 and Rules made there under. The functioning of the Two squads during 2006-2007 is summarised below:

### 3.3.2a. Kerala Mineral Squad (Northern Region)

Kerala Mineral Squad (Northern Region) have jurisdiction over Palakkad, Malappuram, Kozhikkode, Kannur, Wayanad and Kasaragod Districts.

The Northern Squad has inspected the quarries, mines and detected clandestine movement of minerals their area of jurisdiction. A total number of 236 cases of unauthorized transaction of minerals were detected and were compounded by realizing a total sum of Rs. 14,06,000. One case was filed before the court of law.

### 3.3.2b. Kerala Mineral Squad (Southern Region)

The Southern Squad has also inspected the quarries, mines and detected clandestine movement of minerals their area of jurisdiction. The area of jurisdiction comprises, Thiruvananthapuram, Kollam, Alappuzha, Pathanamthitta, Kottayam, Idukki, Ernakulam and Thrissur Districts. They have conducted extensive tours to all the districts under their control and detected 316 cases of illegal mining and clandestine movement of mineral and realized Rs. 22,10,000 by way of compounding. Consequent to the awareness created by the frequent inspection of the squad, many people could be persuaded to come forward to obtain mineral concessions.

## 4.0.0. Major Constraints Encountered by the Department

There are many competent authorities other than the Director of Mining and Geology for the implementation of Kerala Minor Mineral Concession Rules in the state but most of them are not exercising the powers vested with them to grant mineral concessions. As a result considerable revenue from minerals by way of application fee, royalty, surface rent etc., is being lost. Besides due to lack of technical know how the other competent authorities are not able to identify the various rock types. This leads to under utilization of rocks having dimensional quality, which may in turn lead to loss of revenue.

The other competent authorities very often grant quarrying permits for very small quantity over longer periods leading to misuse of the permits issued, which results in heavy loss of revenue by way of royalty.

Likewise indiscriminate mining of brick/tile clay also causes serious threat to the environment. It is seen that this factor is also not taken care often properly by the competent authorities other than the Director of Mining and Geology.

The district offices at Kollam, Palakkad, Cherthala, Alappuzha, Malappuram and Wayanad are housed in rental building. The department is spending a considerable amount towards rent. It is desired that proper housing may be provided for these offices to minimize expenditure and for easy access to public by building space in the civil stations.

## 5.0. Man Power Planning and Developing

The officers of the Department have undergone various training programmes during the year 2006-07 which is given in Appendix O.

## 6.0. Statistical Information

Mineral concessions in force as on 31-3-2007 are given below:

### 6.1. Major Minerals

1.	Prospecting licence	:	15
2.	Mining lease	:	87
3.	Reconnaissance permit	:	1

### 6.2. Minor Minerals

1.	Quarrying Permit	:	2917
2.	Quarrying lease	:	361
3.	Dealer's Licence	:	777
4.	Registered Metal Crushers	:	83
5.	Prospecting licence	:	15

### 6.3. Receipts

The revenue collection of the Department for 2006-07 is Rs. 26,46,82,963.

**6.3.1. Major Minerals**

1.	Application fee for Mining lease	:	10,500
2.	Application fee for Prospecting Licence	:	1,000
3.	Royalty	:	6,36,16,404
4.	Arrears of Royalty	:	14,03,784
5.	Surface Rent	:	77
6.	Arrears of Surface Rent	:	13,793
7.	Dead Rent	:	154
8.	Compounding	:	3,75,000
9.	Miscellaneous	:	4,000
Total			<u>6,54,24,712</u>

**6.3.2. Minor Minerals**

1.	Royalty	:	12,70,20,743
2.	Arrears of Royalty	:	3,30,632
3.	Surface Rent	:	2,51,462
4.	Arrears of Surface Rent	:	12,991
5.	Dead Rent	:	21,23,210
6.	Arrears of Dead Rent	:	42,847
7.	Application fee for QP	:	28,98,200
8.	Application fee for QL	:	3,79,900
9.	Application fee for PL	:	1,270
10.	Fee for Dealer's Licence	:	33,41,184
11.	Consolidated Royalty	:	1,26,25,000
12.	Compounding	:	2,79,38,376
13.	Other Department	:	2,15,12,231
14.	Other Receipt	:	6,36,310
15.	Other Miscellaneous	:	1,43,895
Total			<u>19,92,58,251</u>
Grand Total			<u>26,46,82,963</u>

**6.4. Expenditure**

Total expenditure incurred during the year 2006-07 amount to Rs. 416. 06 lakhs.

Non Plan	:	Rs. 382.43 lakhs
Plan	:	Rs. 33.63 lakhs

<i>Head of Account</i>	<i>Allotment (lakhs)</i>	<i>Expenditure (lakhs)</i>
2853-02-03-99-Training of personnel	1.000	0.95342
2853-02-004-99-Strengthening of Chemical Lab	7.000	1.20310
2853-02-102-99-Mineral Investigation	32.000	31.4649
Total Plan	40.000	33.62142
2853-02-102-97-KMMS (NP)	18.370	17.21690
2853-02-001-99 (NP)	390.200	365.21000
Total	448.570	416.06000

## APPENDIX B

**STATEMENT SHOWING PERFORMANCE OF SUBORDINATE OFFICES  
DURING THE YEAR 2006-2007 (As on 31-3-2007)**

Name of Office	Quarrying Lease		Quarrying Permit		Dealer's Licence		Revenue Collection		GRAND TOTAL	RMCU Regis- tered Metal Crusher	No. of cases com- pounded
	Issued	as on 31-3- 07	Issued	as on 31-3- 07	Issued	as on 31-3- 07	Major Minerals	Minor Minerals			
Thiruvananthapuram	17	74	317	103	21	5	10627607	18406557	29034164	7	293
Kollam	4	13	819	184	78	9	20227768	23959807	44187575	1	691
Pathanamthitta	8	44	904	75	14	14	0	12019449	12019449	14	129
Kottayam	8	22	1102	220	108	78	2066400	10457410	12523810	4	140
Idukki	7	33	1209	154	21	24	0	7271337	7271337	12	26
Alappuzha	Nil	Nil	373	297	92	92	2455354	2548265	5003619	Nil	42
Ernakulam	13	51	521	137	215	215	12500	14781042	14793542	15	15
Thrissur	5	34	2874	307	58	76	0	23214955	23214955	12	155
Malappuram	2	21	1184	334	55	64	0	23241358	23241358	5	340
Palakkad	1	10	2014	306	21	21	23268870	18315790	41584660	4	139
Kozhikode	2	32	1000	207	16	16	0	16484643	16484643	5	179
Kasaragod	Nil	2	1299	300	18	38	1248869	8652100	9900969	Nil	192
Wayanad	Nil	7	837	77	25	38	24000	4067559	4091559	Nil	23
Spl. Office:Cherthala							2721406	420000	3141406	Nil	61
Kannur		18	1298	216	87	87	1313861	10456529	11770390	4	150
KMS (NR)							0	1406000	1406000	Nil	236
KMS (SR)							25000	2185000	2210000		316
DIRECTORATE							1433077	1370450	2803527		
Total	70	361	15751	2917	829	777	65424712	199258251	264682963	83	3127

## APPENDIX C

## List of Mining Lease in force as on 31-3-2007

Sl. No.	LD No.	Name & address of the lessee	1. Village 2. Taluk 3. District	Extent with Survey Nos.	Period & date of execution	Name of mineral	Date of registration
(1)	(2)	(3)	(4)	(5)	(6)	(7)	(8)
<b>BAUXITE:</b>							
1.	Bxe.1	M/s. Kaveri Chemicals (P) Ltd., Thirumoolapuram, Thiruvalla-689 115	Puruvazhy, Kunnathur, Kollam	0.65 hectare Sy. No. 327/1-1	15 years 24-7-1996	Bauxite	..
2	Bxe. 2	Smt. M. Ameenammal, Manju, K. C. VII/448 Olayail Thevally, Kollam.	Sooranad, North, Kunnathur, Kollam	0.392 hectare Sy. No. 750/10-2 & 750/9	10 years 14-11-2005	Bauxite	..
3	Bxe. 3	Smt. A. Rahiyanath, W/o Shri Abdul Samad, R.R.Building, Suppliers, K.K. Building, Ochira, Kollam District	Sooranad, North, Kunnathur, Kollam	0.3317 hectare Re.Sy.No.749/5/2 & 749/9/2	10 years 29-6-2005	Bauxite	28-5-2005
4	Bxe. 4	M/s. Kaveri Chemicals, Thirumoolapuram, Thiruvalla	Venmany, Chenganoor, Alappuzha	1.1262 hectare 15/3, 15/5, 15/6-1, 15/6-2, 15/10, 15/11, 21/2, 21/3-1, 21/3-2, 21/3-3, 21/3-4, 21/3-5, 21/3-6 & 21/3-7	15 years 27-1-2005	Bauxite	7-2-2007
5	Bxe. 5	M/s. Kaveri Chemicals, Thirumoolapuram, Thiruvalla	Venmany, Chenganoor, Alappuzha	2.0939 Hectare 16/1-1, 15/12-1, 16/2-2, 15/1-21, 15/2-1, 15/3-1, 15/1-2, 15/2-2, 15/3-2, 15/4-2, 15/4-1, 15/5-1 & 15/5-2	5 years	Bauxite	6-3-2012
<b>CHINA CLAY:</b>							
6	Cl. 1	M/s. English Indian Clays Ltd., Veli, Thiruvananthapuram	Melthonnakkal, Tvpm, Tvpm.	2.6900 hectares Sy. Nos.434/8, 434/9, 434/15, 434/16, 434/17, 482/11, 483/2, 483/6 & 484/2	20 years 2-4-1987	China Clay	..
7	Cl. 2	M/s. English Indian Clays Ltd., K.P.III 428, Veli, Thiruvananthapuram	Melthonnakkal, Tvpm, Tvpm.	1.97 hectares Sy. Nos. 3 & 4 pt (old Sy. Nos. 2640/2-1, 2640/21/4/2,3,4)	20 years 30-9-1994	China Clay	..
8	Cl. 3	M/s. English Indian Clays Ltd., K.P.III 428, Veli, Thiruvananthapuram	Melthonnakkal, Tvpm, Tvpm.	2.2025 hectares Re. Sy. Nos. 487/4 5,8,9,10,11,12,13,14 (Block No. 4) (old Sy. Nos.26/40/18-1, 2,3,4 & 2640/38-1, 2,3,75)	20 years 12-10-1995	China Clay	..

## APPENDIX C (Contd.)

(1)	(2)	(3)	(4)	(5)	(6)	(7)	(8)
9	Cl. 4	Sri S. Nizamudeen, Nizam Manzil, Murukkumpuzha P.O. Thiruvananthapuram	Veiloor, Tvpam, Tvpam.	0.4360 hectares Re- Sy.Nos. 329/9 & 10 Block No.2 (Old Sy. No.1411/13& 29)	20 years 19-10-1995	China Clay	..
10	Cl. 5	Smt. P.K. Niza, W/o Sri E.A.Rasheed, Managing Partner, Standard Kaolin, TC 36/1336, Vallakkadavu P.O., Thiruvananthapuram	Melthonnakkal, Tvpam, Tvpam.	3.8122 hectares Sy.Nos. 432/10, 423/11, 424/1, 424/2, 424/3 424/4, 424/5	20 years 20-10-1995	China Clay	..
11	Cl. 6	M/s.Wolken, Industries Ltd., Lake view, IP single Marg, Udaipur, Rajasthan	Pallimon, Kollam, Kollam.	1.5060 hectares Re-Sy. Nos. 395/2 3, 4, 5, 6, 7, 8, 400/1, 2 Block No. 21	20 years 30-1-1996	China Clay	Transfer G.O.(MS) No. 27/05/ID Dated 7-3-2005
12	Cl. 7	M/s. Wolken, Industries Ltd., Lake view, IP single Marg, Udaipur, Rajasthan	Pallimon, Kollam, Kollam.	1.6797 hectares Re-Sy. Nos. 400/3, 13,14, 15, 16, 17, 18, Block No. 21	20 years 15-4-1996	China Clay	Transfer G.O.(MS) No. 25/05/ID Dated 7-3-2005
13	Cl. 8	M/s. Radha Clays, Uthamam, LIC Lane, Pattom, Tvpam	Veiloor, Tvpam, Tvpam.	11.5680 hectares Re-Sy.No. 206 (Old Sy.No.534/5- 2)	20 years 9-9-1996	China Clay	..
14	Cl.9	M/s. English Indian Clays Ltd., K.P.III 428, Veli, Thiruvananthapuram	Pallippuram & Andoorkonam Tvpam. Tvpam.	4.2015 hectare Re-Sy. No.399 of Pallipuram Village R.S.I of Andoorkonam Village	20 years 14-5-1997	China Clay	..
15	Cl. 10	Shri K. J.Thobias, Kodiyl Puthenveedu, Kanjirakode, Kundara P. O., Kollam	Nedumpana, Kollam, Kollam.	0.4390 hectare Sy. Nos. 177/30, 177/12, 177/13, 177/14	10 years 13-6-1997	China Clay	..
16	Cl. 11	The President, N.S.S. Karayogam, Reg. No. 520 Kalliyoor P. O., Thiruvananthapuram	Kalliyoor, Tvpam, Tvpam.	0.6485 hectare Re-Sy. No. 503/4 (Old Sy.No.409/4- 1)	10 years 1-8-1997	China Clay	..
17	Cl.12	Shri N. S. Babu, S/o P. K. Neelakantan, Proprietor Bharathy Clays, Kalpaka Nagar, Chackai, Tvpam.	Veiloor, Tvpam, Tvpam.	0.8840 hectare Re-Sy. 196/2-1, 198/6 & 198/7-1	10 years 21-1-1998	China Clay	..



## APPENDIX C (Contd.)

(1)	(2)	(3)	(4)	(5)	(6)	(7)	(8).
18	Cl. 13	Sri S. Sreekumar, Narayaneem, Burma Road, Medical College P. O., Thiruvananthapuram	Veiloor, Tvp., Tvp.	3.208 hectare Sy. No.534/5-4-4 (Re-Sy. No.208, Block No. 3	10 years 4-5-1998	China Clay	..
19	Cl.14	Smt. Jaya, Balagangadharan, R. 7 Jai Nagar, Medical College P. O., Thiruvananthapuram.	Veiloor Tvp., Tvp.	3.869 hectare Sy. No.534/4 & 5	10 years 6-12-1999	China Clay	..
20	Cl. 15	Dr. S. Najeeb, S/o M. Shamsudeen Labba, FASL Clay Mine, Sasthavattom P. O., Thiruvananthapuram	Veiloor, Tvp., Tvp.	0.2745 hectare Sy. No. 169/3	8 years 11-1-2002	China Clay	16-1-2002
21	Cl. 16	Sri M. Rahim, Karuvalakom, Azhoor, Perunguzhy, Thiruvananthapuram	Pallippuram & Andoorkonam, Tvp., Tvp.	0.6908 hectares Sy. Nos. 417/12,14, 418/1pt, 114/14pt	5 years 30-11-2002	China Clay	6-4-2002
22	Cl. 17	M/s. Clay India, Vijayodaya, Sankar Road, Sasthamangalam, Thiruvananthapuram	Veiloor, Tvp., Tvp.	0.7400 hectare Sy. No. 149/6	10 years 28-2-2003	China Clay	5-3-2003
23	Cl. 18	Sri M. A. Nazar, Fast Clays & Minerals, Kowdiar, Tvp.	Veiloor, Tvp., Tvp.	2.1979 hectares Sy. Nos. 246/3, 4, 6, 7, 15, 16, 24, 28, 29, 30, 31, 32	20 years 28-3-2003	China Clay	11-4-2003
24	Cl. 19	M/s. Shams Clays, Shukkur Manzil, Block No. 65, Chilambil Sasthavattom P. O., Thiruvananthapuram	Veiloor, Chirayinkeezhu, Tvp.	0.8468 hectare Sy. Nos. 1764/1pt, 1764/3pt, 1764/pt & 1764/5pt	20 years 28-7-2003	China Clay	1-8-2003
25	Cl. 20	M/s. DBH, International Private Limited N.75, Connaught Circle New Delhi-110 001	Melthonnakkal, Tvp., Tvp.	3.4350 hectare Re-Sy. No. 470/8, 465/1-1, 465/3, 465/4, 465/15, 465/6, 465/13-1, 465/12, 465/14, 465/8, 471/17, 471/18 & 465/5	15 years 19-11-2003	China Clay	28-11-2003
26	Cl. 21	M/s. English Indian Clays Ltd., Veli, Thiruvananthapuram	Melthonnakkal, Tvp., Tvp.	2.9253 hectare Sy. Nos. 478/3, 8, 7, 504/1- 1, 478/2, 4, 471/8, 47 7/6, 9, 5, 7, 478/6, 47 1/11, 477/10, 471/1 2, 478/5- 1, 471/10, 9, 478/3- 1, 478/1, 479/14- 4, 478/5-1, 564/4-1	20 years 8-9-2004	China Clay	17-9-2004

## APPENDIX C (Contd.)

(1)	(2)	(3)	(4)	(5)	(6)	(7)	(8)
27	Cl. 22	M/s. English Indian Clays Ltd., KP III/428, Veli, Thiruvananthapuram	Melthonnakkal Tvp. Tvp.	3.57 hectare Re-Sy. Nos. 2640/21 -3-2, 2640/49-1, 2640/47-1, 2640/56, 2640/47, 2649/22-81, 2640/198, 2640/68-8, 2640/22-82-1, 2640/22-75, 2640/68-1, 2640/68-222-75 & 2640/7-2	20 years 22-9-2003	China Clay	..
28	Cl. 23	Sri Abdul Nazar, Surya Clays, Parayil Puthen Veedu, Kurakkod, Thiruvananthapuram	Azhoor, Chirayinkeezhu, Tvp.	2.0194 hectare Sy. Nos. 1735, 1735/1, 1735/1-1, 1736, 1764, 1764/1, 1764/1-1 1764/1-1-2, 1764/1-2, 1764/1- 5-2, 1764/1-6, 1764/1-6-1, 1764/5-1 & 1764/5-1-1	20 years 27-10-2004	China Clay	29-10-2004
29	Cl. 24	M/s. English Indian Clays Ltd., Veli, Thiruvananthapuram	Melthonnakkal, Tvp. Tvp.	2.3210 hectare Sy. Nos. 425/4, 3&1, 426/4 & 426/2-2-1	12 years 3-11-2004	China Clay	..
30	Cl. 25	Sri Mohammed Hilal, Hilal Manzil, Karichara, Pallippuram, Thiruvananthapuram	Azhoor, Chirayinkeezhu, Tvp.	1.9445 hectare Sy. Nos. 1747, 1748, 1764/1-2-1, 1764/5-7-5, 1764/5, 1764/5-7- 1, 1764/5-7, 1774/1 & 1748/1	20 years 19-11-2004	China Clay	..
31	Cl. 26	Sri Abdul Hameed, Grand Clay Mines Nizam Manzil, Sasthavattom, Perumkuzhy P. O.	Azhoor, Chirayinkeezhu, Tvp.	0.7446 hectare Sy. Nos. 1764/5-10- 1, 5-10-2, 5-10 & 5-10-3-1	7 years 29-1-2005	China Clay	..
32	Cl. 27	M/s. Southern Clays, and Minerals Pvt. Ltd., Neeleswar, Kasargode-671 314	Perol, Hosdurg, Kasargode	2.925 hectares Re-Sy. No. 290/1	5 years 15-3-2005	China Clay	..
33	Cl. 28	Smt. S. Meharban, Swathi Nagar, Kazhakuttom, Tvp.	Veiloor, Tvp. Tvp.	0.5280 hectare Re-Sy. No. 150/4	5 years 21-3-2005	China Clay	..
34	Cl. 29	M/s. English Indian Clays Ltd., Veli, Thiruvananthapuram	Melthonnakkal, Tvp. Tvp.	2.6593 hectares in Re-Sy. Nos. 490/2, 490/1-1, 490/1, 487/7, 489/15 & 489/1-2 (Block No. 4)	15 years 22-3-2005	China Clay	...

## APPENDIX C (Contd.)

(1)	(2)	(3)	(4)	(5)	(6)	(7)	(8)
35	Cl. 30	Smt. Suharabeevi, New Bangalow, Karamoou, Thonnakkal P. P., Tvpm.	Melthonnakkal, Tvpm. Tvpm.	6.4367 hectare Re-Sy. Nos. 522/2, /7 Old Sy. No. 2655/2, 3, 2654, 2512/1 & 2654/13/51	20 years 7-6-2005	China Clay	23-7-2005
36	Cl. 31	Smt. Naffissa Beevi, TC. 15/2004, Dwaraka, W.C. Lane, Vazhuthacadu, Tvpm-14.	Melthonnakkal, Tvpm. Tvpm.	4.8040 hectare Sy. Nos. 522/3,5, 6, 5 23/1,2	20 years 24-8-2005	China Clay	19-10-2005
37	Cl. 32	M/s. Clay India, A-44 Vijayodaya, Sankar Road, Shasthamangalam, Tvpm.	Vailoor, Tvpm. Tvpm.		17 years 7-10-2004	China Clay	..
38	Cl.33	Shri A. Navas, A. K. Manzil, Andoorkonam P. O., Tvpm.	Azhoor, Chirayinkeezhu, Tvpm.	1.6251 hectare Sy. Nos. 1765/1, 1764/5- 1, 1764, 1764/3, 11	20 years 16-11-2005	China Clay	23-11-2005
39	Cl.34	Sri N. S.Babu, Proprietor, Bharathy Clays, 1/A, Kalpana Nagar, Chakka, Tvpm.	Azhoor, Chirayinkeezhu, Tvpm.	2.9098 hectare Sy. Nos. 1764/5-3-1, 5, 1, 1-5-2, 1-5-1 1, 1-5-2, 1-5-1, 1-1, 1770/2, 3, 1-1, 2- 1, 3-1, 1779/A- 1, B4, b, 4-1-1, D2, D-5, D-6, D-7, D-7- 1, A-1-, A-1, 2-1, A- 1-3, A-1-4-1, A- 5, A-1-1-1-1, A2, C- 1, C2, B3, B-2, B-1- 1, 1798/2, 1, 3 & 1- 2-4	20 years 15-12-2005	China Clay	..
40	Cl. 35	Shri Abdul Rahman kutty, T. C. 15/2004, Womens College Lane, Vazhuthacadu, Tvpm-14.	Melthonnakkal, Tvpm. Tvpm.	1.0729 hectares Re-Sy. Nos. 477/12 477/4, 477/7, 479/1 3	20 years 21-12-2005	China Clay	4-1-2006
41	Cl. 36	Shri Abdul Hassan , Hassan Brothers building, Near Nambiarkulam, Pallipuram, P. O., Tvpm.	Vailoor, Village Tvpm. Tvpm.	1.0117 hectares Sy. No. 216/1	20 years 7-2-2006	China Clay	10-2-2006
42	Cl. 37	Smt. Naffisa Beevi, T. C. 15/2004, Dwaraka, Vazhuthacaud, Tvpm.	Melthonnakkal, Tvpm. Tvpm.	2.7280 hectares Sy. No. 523/3 Block No. 4	20 Years 15-5-2006	China Clay	2-6-2006

## APPENDIX C (Contd.)

(1)	(2)	(3)	(4)	(5)	(6)	(7)	(8)
43	Cl. 38	Sri Abdul Hameed, Shine Clay Mines Hijas Manzil, Sasthavattom, Tvp.m.	Veilur, Tvp.m. Tvp.m.	0.8094 hectares Sy. No.153/4-3 and 153/4-4 Block No. 3	7 years 17-4-2006	China Clay	7-6-2006
44	Cl. 39	M. Abdul Rahimankutty, TC 15/2014, Women College Lane, Vazhuthacaud, Tvp.m.	Melthonnakkal Tvp.m. Tvp.m.	1.0729 hectares Re-Sy.No 477/12, 21-12-2005 477/4,7 & 479/13	20 years Clay	China	4-1-2006
<i>LIME SHELL :</i>							
45	Lss. 1	M/s. Vaikom Taluk, White Lime shell, Co-operative Society Ltd., No. 357, Ambika, Market P. O., Vaikom, Kottayam	Kumarakom Kottayam Kottayam	500 hectares (Old Sy. No.444/1)	20 years 9-5-1995	Lime shell	..
46	Lss.2	M/s. Vaikom Taluk, White Lime shell, Co-operative Society Ltd., No. 357, Ambika, Market P. O., Vaikom, Kottayam	Vaikom, Vaikom, Kottayam	Sy. No.94/5 pt.	20 years 3-3-2005	Lime shell	..
47	Lss. 3	Karappuram White Lime Shell, Vyavasaya Co- operative Society Ltd. No. A-144, Muhamma P. O.	Thanneer- mukkom (South) Cherthala Alappuzha	500 hectares Sy. No.385/1/ part 21-7-2016 (Old Sy. No.475/1 Vembanad lake)	upto	Lime shell	..
48	Lss. 4	M/s. Kuttanad, Karuthakakka Vyavasaya Co- operative Society Ltd. No. A-1010, Nedumudy P. O., Alappuzha	Champakulam Kuttanadu Alappuzha	4.2 hectare Sy. No.298/1	5 years 29-3-2004	Lime shell	15-7-2004
49	Lss. 5	M/s. Travancore Cements Ltd., Nattakom, Kottayam	Kainakary North, Kuttanad, Alappuzha	4.9 hectare Sy. No. 91 in block No.3	5 years 1-9-2005	lime shell	26-9-2005

## APPENDIX C (Contd.)

(1)	(2)	(3)	(4)	(5)	(6)	(7)	(8)
50	Lss. 6	M/s. Muhamma Clam Marketing processing and general marketing Co-operative Society Ltd., No.A-1078, Muhamma P. O., Alappuzha	Mannanchery Ambalappuzha Alappuzha	4.90 hectares Kayal purampoke in Sy. No.1 of block 5	20 years 22-3-2006	Lime shell	6-6-2006
<i>LIMESTONE :</i>							
51	Lst. 1	M/s. Malabar Cements Ltd., Walayar	Pudussery Malampuzha Palakkad	245.69 hectares, Sy. No.1580/2, 3 of Pudussery, 866/1, 867/12,13,14, 868/2, 869/1, 874/33 of Malampuzha	20 years 20-11-2002	Lime stone	No registration
<i>LATERITE :</i>							
52	Lt. 1	Sri C. N. Sreenivasan 872/D, Poyyil P. O., Thaliparampa Kannur	Thaliparampa Thaliparampa Kannur	0.1922 hectares Re-Sy. No.7 (part)	10 years 27-11-2002	Laterite	..
53	Lt. 2	M/s. Kaveri Chemicals Pvt. Ltd., Thirumoolapuram P.O., Thiruvalla, Pathanamthitta	Kollam	1.1262 hectare Sy. No. 15/3,5,6, 15/6-1, 15/6-2, 15/10, 15/11, 21/2, 21/3-1, 21/3-2, 21/3-3, 21/3-4, 21/3-5, 21/3-6& 21/3-7	15 years 27-1-2005	Laterite	..
54	Lt. 3	M/s. Kerala Clays and Ceramic Products Ltd., Clay House, Pappinissery, Kannur	Kannur	20,242 hectares Re-Sy. No. 89/1A pt	20 years 15-3-2005	laterite	..
55	Lt. 4	M/s. Kaveri Chemicals Pvt. Ltd., Thirumoolapuram P.O., Thiruvalla, Pathanamthitta	Pattuvam Thaliparamba, Kannur	01.0305 hectares Sy. No. 205/3 and 206/2	20 years 10-5-2005 Re executed on 23-6-2005	Laterite	2-8-2005
56	Lt. 5	M/s. Kaveri Chemicals Pvt. Ltd., Regd. Office B/D C.V.P. Parliament Square, Cross Junction Thiruvalla-689 101	Venmani Chengannur Alappuzha	2.0939 hectares Sy. No. 16/1-1, 15/12-1, 16/2-2, 15/1-1, 15/2-1, 15/3-1, 15/4-1, 15/5-1, 15/1-2, 15/2-2, 15/3-2, 15/4-2, 15-5-2.	5 years 7-2-2007	Laterite	..

## APPENDIX C (Contd.)

(1)	(2)	(3)	(4)	(5)	(6)	(7)	(8)
<b>MINERAL SAND :</b>							
57	Ms. 1	M/s. Indian Rare Earths Ltd., Chavara-691 583 Kollam	Chavara & Neendakara Village Karunagappally Kollam	67 hectares Sy. Nos.141, 143 to 146, 151 to 157, 167 to 178, 193 to 196, 201 to 205, 211 to 216, 222 to 225, 235, 236, 243 to 246, 252, 253, 255, 634, 681, 689 to 1054, 1060 to 1082, 1087 to 1108, 1115 to 1134, 116 to 1168, 1171, 1172, 1186 to 1193, 1212 to 1236, Part of Sy. Nos. 1230, 1242, 1237, 1210, 1211, 1195, 1194, 1185, 1171, 1169, 1145, 1135, 1136, 1114, 1110, 1109, 1086, 1081, 1080, 1090, 1079, 1063, 1062, 1066, 1059, 1058, 1057, 1056 to 1060 of Chavara village and 1 to 13, 655, 667, 676, 730, 743 and 847 of Neendakara village	20 years 19-4-1999	Mineral sand	..
58	Ms. 2	M/s. IRE Ltd., Chavara, Kollam	Thekkum Bhagam, Chavara, Panmana and Karunagapally Taluk, Kollam, District	102.77 hectares Block No. II and IV	20 years 11-5-2006	Mineral sand	..
<b>SILICA SAND :</b>							
59	Ss. 1	K. V. Jose Kutty, Kariyil House, K. R. Puram, Cherthala, Alappuzha	Thucattusery Cherthala Alappuzha	1.0339 hectares Sy. Nos. 79/11-1-3, 79/11-11/2, 79/11- 11/1, 79/11-11/2, 79/15-1, 80/1-1, 80/12-B-2, 80/6-1, 80/4-3/7, 80/4-3/5 & 80/4-4	5 years 3-11-2003	Silica sand	6-11-2003
60	Ss. 2	Thomas Francis Kariyil House, Thirunallor P. O., Pallippuram, Cherthala	Thucattusery Cherthala Alappuzha	0.8094 hectares Sy. Nos. 48/16, 55/16- 2, 55/17 & 55/20	5 years 27-11-2003	Silica sand	5-12-2003

## APPENDIX C (Contd.)

(1)	(2)	(3)	(4)	(5)	(6)	(7)	(8)
61	Ss. 3	Smt. Jayasree, Padinjarathil House, Pozhayannoor, P. O., Vadakkethara, Thrissur	Thanneer- mukkom Cherthala Alappuzha	1.7625 hectare Sy. No. 145/1	15 years 28-1-2004	Silica sand	1-3-2004
62	Ss. 4	Shri Benny Ulahannan, Thaliyadiyil, K. R. Puram P. O., Cherthala, Alappuzha	Thanneer- mukkom Cherthala Alappuzha	1.1261 hectare Sy. No. 399/10, 403/1- 1, 403/4-3, 403/6-1, 403/6-4, 403/6-5, 403/6-6, 403/4-1, 400/4, 400/13 & 400/5-2	4 years 17-9-2004 403/6-2-1, 403/6-3,	Silica sand	1-1-2005
63	Ss. 5	Smt. P. M. Fathima, Fathima Mansion, Barkat, Thiruvampady, Alappuzha	Thycattuserry Cherthala, Alappuzha	1.0015 hectares Sy. Nos. 87/8-1, 87/8- 2, 87/9A2, 87/9B2, 87/9B, 87/10-2 & 87/10	3 years 29-9-2004	Silica sand	1-1-2004
64	Ss. 6	Shri C. R. Venu, Gem Glass Industries Cherthala, Alappuzha	Thycattuserry Cherthala Alappuzha	0.8621 hectares Sy. Nos. 74/25 A2, 74/25A4, 74/35A6, 74/25A3, 74/25A, 74/27A, 74/27A2, 75/12, 74/11-A1, 75/4 & 75/5A	2 years 2-12-2004	Silica sand	...
65	Ss. 7	C. K. Jyothiraj Jyothi Bhavan CMC 4/698 Cherthala, Alappuzha	Thycattuserry Cherthala Alappuzha	0.4268 hectares Sy. Nos. 116/2A, 116/2B2, 116/6A1	5 years 14-12-2004	Silica sand	1-3-2005
66	Ss. 8	Smt. Sherly Joseph, Kumpail House, SMC VI, Cherthala, Alappuzha (Fresh)	Thycattuserry Cherthala Alappuzha	1.5572 hectares Sy. No. 73/17B2-1, 74/10, 74/11-1, 74/9B2, 74/9A6, 74/9A5, 74/25B2-1, 74/25B2, 74/25B, 74/5A2, 74/5B, 74/4-1, 74/6, 91/1A, 91/1B, 91/1C, 91/2A2 & 91/4-1	8 years 23-12-2004	Silica sand	3-1-2005
67	Ss. 9	smt. Fathima, Fathima Mansion, Bharkkath, Thiruvam- bady, Alappuzha, (Renewal)	Kanjikuzhy Cherthala, Alappuzha	1.322 hectares Sy. Nos. 379/11-2, 379/12, 379/13, 379/14-2, 380/8, 381/6	5 years 22-3-2005	Silica sand	31-3-2005
68	Ss. 10	Smt. Sherly Joseph, Kumpail House, SMC VI, Cherthala, Alappuzha	Pallipuram Cherthala Alappuzha	1 hectare Sy. Nos. 236/13A, 236, 8CC2, 236/7B, 236/7C4, 736/7C, 236/13A, 236/7B, 7C2 & 236/7CC4	5 years 18-5-2005	Silica sand	30-5-2005
69	Ss. 11	Sri C. K. Muthalai Propreitor, South Indian Chemicals, Velloorvattom, Cherthala, Alappuzha	Pallipuram Cherthala Alappuzha	1.1476 hectares Sy. Nos. 233/34-5, 34- 5-2, 34-1-2, 39, 37- 1, 35-2	3 years 27-7-2005	Silica sand	19-5-2005

## APPENDIX C (Contd.)

(1)	(2)	(3)	(4)	(5)	(6)	(7)	(8)
70	Ss. 12	Sri C. Ashokaraj, Uthradom, T.C. 11/395 E-18, Kanakanagar, Kowdiar P. O., Thiruvananthapuram	Thycattussery Cherthala Alappuzha	0.5614 hectare Sy. Nos. 89/11-4, 10- 5, 12-3, 12-1-7, 12- 2, 12-6	4 years 5-8-2005	Silica sand	22-9-2005
71	Ss. 13	Sri Jalaluddin, A. Barkath, Thiruvampadi, Alappuzha-02	Thycattussery Cherthala Alappuzha	1.0339 hectare Sy. Nos. 114/9/A3, A4, A3/4, 9B, 9D, A7, 114/15-1, 1-4, 114/16- 1, 114/17/1-2, 1-3 & 114/17-1	10 years 18-8-2005	Silica sand	..
72	Ss. 14	Sri. James Mathew, Mukkada house, Perumpanachy P.O., Changanassery, Kottayam	Pallipuram Cherthala Alappuzha	1.0342 hectare Sy. Nos. 144/22-3, 30, 145/3A1, 144/3A2, 145/3B, 4-1, 5-1, 5-2- 1, 5-2, 16B, 20A, 20B, 22-1	5 years 19-8-2005	Silica sand	10-2-2006
73	Ss. 15	Sri V. O. Mathew, Vathapallil house, Pallipuram, Cherthala, Alappuzha	Thycattussery Cherthala Alappuzha	0.3292 hectare Sy. Nos. 55/3-1, 3-5, 4-B1, 4B2	3 years 22-12-2005	Silica sand	20-02-2006
74	Ss. 16	Sri C. K. Ashokan, Meena Sillicates, Cherthala, Alappuzha	Pallipuram Cherthala Alappuzha	0.8234 hectare Sy. Nos. 189/14/3-2, 4- 2, 15-1, 14-3, 189/15/2-3, 90/13-1	2 years 4-1-2006	Silica sand	10-04-2006
75	Ss. 17	Sri G. Raju, Kochammadathil, Thirunelloor P. O., Cherthala, Alappuzha	Thanneer mukku North, Cherthala Alappuzha	1.0099 hectare Sy. Nos. 110/3-2, 4-2, 5, 6, 7, 11	5 years 6-2-2006	Silica sand	10-02-2006
76	Ss. 18	Sri Philip D'Souza, Rose gardens, Edacochin, Cochin-6	Kanjikuzhy Cherthala Alappuzha	1.1963 hectare Sy. Nos. 520/1-1, 1-2,	3 years 9-3-2006	Silica sand	..
77	Ss. 19	Sri C. K. Muthalali, Veliyil house, Velloorvattom, Cherthala, Alappuzha	Thycattussery Cherthala Alappuzha	1.0102 hectare Sy. Nos. 112/9-2, 113/6-2, 7-2, 8-1, 8-2, 9A, 9B-1	3 years 10-3-2006	Silica sand	10-04-2006
78	Ss. 20	Sri Cyriac Mathew, Panmvelil, Muttambalam, Kanjikuzhi, Kottayam	Thycattussery Cherthala Alappuzha	1.0236 hectare Sy. No. 81/30-1, 81/30-3, 81/30-4, 83/8, 114/2, 114/5-1, 114/5-2	3 Years 24-05-2006	Silica sand	06-06-2006
79	Ss. 21	Smt Kavitha Mol, Vathappallil House, Pallipuram P. O., Cherthala	Panavally Cherthala Alappuzha	1.0007 hectare Sy. No. 67/2A, 75/12B, 75/12A, 77/19-1, 77/19-2, 77/20, 77/22-3 and 77/23	5 years 15-6-2006	Silica sand	27-06-2006



## APPENDIX C (Contd.)

(1)	(2)	(3)	(4)	(5)	(6)	(7)	(8)
80	Ss. 22	Sri C. R. Venu, Cheruvally House, Thirunallor P. O., Cherthala	Thycattussery Cherthala Alappuzha	1.1390 hectare Sy. No.8/2-2, 8/2/3-1, 8/2-1, 8/2-2-2, 8/2-4, 20/2-2.	7 years 30-06-06	Silica sand	..
81	Ss. 23	M/s. Southren Minerals Industries Ltd. 90A, Thycattussery, Cherthala	Thycattussery Cherthala Alappuzha	2.4236 hectare Sy. No. 9/4-2, 9/5, 9/6, 9/7A, 9/7A2, 9/8-1, 9/8-2, 9/9, 9/10-2, 10/1-10-1, 10/1-10-4, 10/3-10-2, 10/4-2, 17/4-1, 17/4-2	5 years 18-07-06	Silica sand	26-07-2006
82	Ss. 24	Smt. Aswathy, K. S., Sandhya Nivas, CMC-XVII, Cherthala	Pallipuram Cherthala Alappuzha	1.0034 hectare Sy. No. 223/24, 238, 5B, 238/5A-1, 238/5A-2, 223/25, 223/25-2	7 years 22-07-06	Silica sand	22-08-2006
83	Ss. 25	M/s. Fathima Mines and Chemicals (Pvt.) Ltd., Barkath, Thiruvambady, Alappuzha	Thycattussery Cherthala Alappuzha	1.1454 hectare. 83/3A, B1, A2, 83/3A3, B2 83/3A4, 83/4A1, B1, A2/1 and 83/4/2	10 years 27-07-06	Silica sand	..
84	Ss. 26	Sri Mohit Babu, Kailas, Velloorvattom Cherthala	Thycattussery Cherthala Alappuzha	1.9384 hectare Sy. No. 72/26-2, 72/26-3, 72/29-7 72/31-4, 73/1-6, 73/1- 1, 73/1-2, 73/1-3, 73/1-4, 73/2-1, 73/2- 2, 73/14-4, 73/14-1, 73/14-9, 73/15-4, 73/15-2, 73/15-3, 73/16A2, 73/16B2, 73/16B3, 73/16B4, 73/17A1, 73/17A3, 73/17B, 73/17A2, 73/18Band 73/18A2	18 years 28-07-06	Silica sand	..

## QUARTZ:

85	Qtz. 4	M/s. Wayanad Minerals & Metals, Korani, Varadoor, P. O., Wayanad	Kaniyambatta Vythiri Wayanad	0.4876 hectare 204/4, 204/5	10 years 28-10-98	Quartz	..
86	Qtz. 2	M/s. Calicut minerals Reg. No. 951/2004, Door. No. 4/440, Maujini road, Pookkottur, Mundithodika, Malappuram	Thiruvampadi Kozhikode Kozhikode	2.023 hectare Unsurveyed land	20 years 25-11-05	Quartz	..

## APPENDIX C (Contd.)

(1)	(2)	(3)	(4)	(5)	(6)	(7)	(8)
<b>GRAPHITE :</b>							
87	Gr 1	M/s. Thomson Graphite Mines & Crucible Works, Company mukku, Vellanad P. O., Tvpm.	Kalloorkad Muvattupuzha Ernakulam	1.2544 hectares Sy. No. 744/1-25, 1-13 & 1-24 747/1-B5, 746/1-A3	20 years 20-03-06	Graphite	7-06-2006

## RECONNAISSANCE PERMIT FOR GOLD :

G1	M/s. Decan Gold Minerals Ltd., No. 49A, Nariman Bhavan, 227, Nariman Point, Mumbai.	Attappadi Block, Palakkad district	834 Sq. Km. Toposheet No. 58A, 58B	3 years	Gold	3-01-2006
----	--	---	--	---------	------	-----------

## APPENDIX D

Statement showing the number of Mining Leases in the State of Kerala as on 31-03-2007  
(Mineral-wise and District-wise)

Sl. No.	Name of the mineral	Thiruvananthapuram	Kollam	Pathanamthitta	Alappuzha	Kottayam	Idukki	Ernakulam	Thrissur	Palakkad	Malappuram	Kozhikode	Wayanad	Kannur	Kasaragod	Total
(1)	(2)	(3)	(4)	(5)	(6)	(7)	(8)	(9)	(10)	(11)	(12)	(13)	(14)	(15)	(16)	(17)
1	Bauxite	..	3	..	2	..	..	..	..	..	..	..	..	..	..	5
2	China clay	35	3	..	..	..	..	..	..	..	..	..	..	..	1	39
3	Graphite	..	..	..	..	..	..	1	..	..	..	..	..	..	..	1
4	Lime shell	..	..	..	5	1	..	..	..	..	..	..	..	..	..	6
5	Lime stone	..	..	..	..	..	..	..	..	1	..	..	..	..	..	1
6	Mineral sand	..	2	..	..	..	..	..	..	..	..	..	..	..	..	2
7	Silica sand	..	..	..	26	..	..	..	..	..	..	..	..	..	..	26
8	Quartz	..	..	..	..	..	..	..	..	..	..	1	1	..	..	2
9	Laterite	..	1	..	1	..	..	..	..	..	..	..	..	3	..	5
10	Reconnaissance Permit for Gold	..	..	..	..	..	..	..	..	1	..	..	..	..	..	1
Total		35	9	..	34	1	..	1	..	2	..	1	1	3	1	88

## APPENDIX E

## Statement showing the production and sale of Bauxite during 2006-2007

Sl. No.	Name of lessee	Production (tonnes)	Sale (tonnes)	Remarks
1	Smt. A. Rahiyanath, Kollam	450	450	
2	M/s. Radha Clays, Thiruvananthapuram (crude low grade bauxite)	12,200	12,200	
Total		12,650	12,650	

## APPENDIX F

## Statement showing the production, sale/consumption of China clay during 2006-2007

Sl. No.	Name of lessee	Production crude	Production processed	Sales crude	Sales processed	Consumption
(1)	(2)	(3)	(4)	(5)	(6)	(7)
1	Shams Clays	3000	..	3000	..	Nil
2	M. Suhara Beevi	38000	..	38000	..	Nil
	M/s. Sulaikha Clay Mine					
3	Sareena Clay Mine	1500	..	1500	..	Nil
4	Abdul Naeer, M/s. Soorya Clay Mine	3000	..	3000	..	Nil
5	M. Rahim	3500	..	3500	..	Nil
6	Jaya Balagangadharan	400	..	400	..	Nil
7	Manoj S. Nair	8000	..	8000	..	Nil
8	Radha Clays	11550	..	11550	..	Nil
9	S. Sreekumar, M/s. Dakshin Clays	8288.14	..	8288.14	..	Nil
10	Abdul Hameed, M/s. Grand Clays	500	..	500	..	Nil
11	S. Naffissa Beevi, Alpha Clays	9500	..	9500	..	Nil
12	A. Navas, M/s. Abdul Karim Clay Mines	1000	..	1000	..	Nil
13	M/s. E.I.C. (Pallipuram Mines)	7000	..	7000	..	7000
14	M/s. DBH	35444.01	..	35444.01	..	35444.01
15	M/s. E.I.C. Karamoodu	60161.51	..	60161.51	..	60161.51

## APPENDIX F—(Contd.)

(1)	(2)	(3)	(4)	(5)	(6)	(7)
16	M. S. Nazar, Fast Clays	16000	..	16000	..	Nil
17	M/s. E.I.C. Mine V	47102.57	..	47102.57	..	47102.57
18	A. M. Manzoor	1000	..	1000	..	Nil
19	N.S.S. Karayogam, Kalliyoor	400	..	400	..	Nil
20	Standard Kaolin	63000	..	63000	..	Nil
21	Abdul Salam	1000	..	1000	..	Nil
22	M/s. E.I.C./ Mine III	47277.015	..	47277.015	..	47277.015
23	Mine IV	32396.785	..	32396.785	..	32396.785
24	Abdul Rahman Kutty	1500	..	1500	..	Nil
25	N. S. Babu	5000	..	5000	..	Nil
26	M/s. E.I.C. Mine I	30000	..	30000	..	30000
27	The Kerala Ceramics Ltd., Kundara	950	..	950	..	950
28	M/s. Wolken Clays	8500	..	8500	..	8500
29	The Kerala Ceramics Ltd., Kundara	Nil	14950	Nil	14950	14950
30	Southern Clays & Minerals Pvt. Ltd., Nileswar	300	Nil	300	Nil	Nil
31	Southern Clays & Minerals Pvt. Ltd., Nileswar	Nil	1600	Nil	1600	Nil
32	kerala Clays & Ceramics Products Ltd., Nileswar	Nil	900	Nil	900	Nil
Total		445270.03	17450	445270.03	17450	283781.89

## APPENDIX G

## Statement showing the production and sale of Lime shell during 2006-2007

Sl. No.	Name and Address. of the lessee	Production (MT)	sales (MT)
1	Muhamma Lime shell Co-op. Society	11000	11000
2	Thycattussery Lime shell Co-op. Society	2500	2500
3	Karappuram white Lime shell Co-op. Society	2800	2800
4	Aryad Lime shell Co-op. Society	5500	5500
5	Kainakary Lime shell Co-op. Society	4800	4800
6	Kuthiathodu Lime shell Co-op. Society	600	600
7	Kavalam Black Lime shell	1200	1200
8	Muhamma Clam Marketing Processing General Marketing Co-op. Society	4119.08	4119.08
9	Kuttanadu Karuthakakka Vyavasaya Sahakarana Sanghom	450	450
10	Y. Muhammed, Nedumtharayil, Arattupuzha (Sea shell)	250	250
Total		33219.08	33219.08

## APPENDIX H

## Statement showing the production and sale of Lime stone during 2006-2007

Name and address of the lessee	Production (tonnes)	Consumption (tonnes)	Remarks
M/s. Malabar Cements Ltd., Walayar, Palakkad district.	517086	517086	Captive mine

## APPENDIX I

## Statement showing the production, sales and consumption of Mineral sand during 2006-2007

Sl. No.	Name of lessee	Name of mineral	Production (tonnes)	Sales (tonnes)	Consumption
(1)	(2)	(3)	(4)	(5)	(6)
1	Indian Rare Earths Ltd., Chavara	Zircon	5200	5200	5200
		Rutile	3000	3000	3000
		Illmenite	109197	109197	109197
		Sillimanite	6841	6841	6841
		Brown Illmanite	600	600	600
2	Kerala Minerals & Metals Ltd, Chavara	Zircon	1800	1800	1800
		Rutile	2405	2405	2405
		Illmanite	60000	60000	60000

## APPENDIX J

## Statement showing the production and sale of Granite Dimension Stone during 2006-2007

Sl. No.	Name and address of the lessee	Production (tonnes)	Sales (tonnes)	Remarks
(1)	(2)	(3)	(4)	(5)
1	M/s. Gem Granite 87, Cathedral Road, Chennai, Q. No. VIII	137.733	137.733	
2	Q. No. X	145.557	145.557	
3	Q. No. XI	31.375	31.375	
4	M/s. Imperial Granite, 76 Cathedral Road	24.892	24.892	
5	Sree Meenakshi Store, Thannimoodu, Thiruvananthapuram	9.099	9.099	
6	S. P. S. Granites, Thannimoodu	113.124	113.124	
7	Imperial Granite, B2 Alss wood Mine, Thycaud (T. G. III)	434.273	434.273	
8	K. P. Granite Industries, T. C. 36/999, Sree santh, Perimthanni, Tvpm.	570.569	570.569	
9	K. Vasumathy, K. P. Enterprises	73.151	73.151	
10	Green Valley Granites, Poothaimmal building, Sivakasi	513.379	513.379	
11	Ajantha, M/s. Sivamurukan Granites, Tvpm.	242.932	242.932	
Total		2296.084	2296.084	

## APPENDIX K

## Abstract of quarrying leases for 2006-2007 as on 31-3-2007

Sl. No.	District	Name of Mineral						Total
		Granite building stone	Laterite	Lime shell	Sea shell	Granite dimension stone	Brick clay	
(1)	(2)	(3)	(4)	(5)	(6)	(7)	(8)	(9)
1	Thiruvananthapuram	49	..	..	..	25	..	74
2	Kollam	13	..	..	..	..	..	13
3	Alappuzha	..	..	..	..	..	..	..
4	Pathanamthitta	43	..	..	..	1	..	44
5	Kottayam	21	..	..	1	..	..	22
6	Idukki	33	..	..	..	..	..	33
7	Ernakulam	51	..	..	..	..	..	51
8	Thrissur	34	..	..	..	..	..	34
9	Palakkad	8	..	..	..	2	..	10
10	Malappuram	21	..	..	..	..	..	21
11	Kozhikode	30	..	..	2	..	..	32
12	Kannur	18	..	..	..	..	..	18
13	Wayanad	7	..	..	..	..	..	7
14	Kasaragod	1	1	..	..	..	..	2
Total		329	1	..	3	28	..	361

## APPENDIX L

## Statement showing number of quarrying permits in force as on 31-3-2007

## (District-wise &amp; mineral-wise)

Sl. No.	District	Name of mineral						Total
		Granite building stone	Laterite	Brick clay	River sand	Ordinary sand	Lime shell	
(1)	(2)	(3)	(4)	(5)	(6)	(7)	(8)	(9)
1	Thiruvananthapuram	101	2	..	..	..	..	103
2	Kollam	134	19	5	..	26	..	184
3	Alappuzha	..	79	72	19	126	1	297
4	Pathanamthitta	70	3	2	..	..	..	75
5	Kottayam	123	3	21	..	73	..	220
6	Idukki	80	..	..	..	74	..	154
7	Ernakulam	132	..	3	..	2	..	137
8	Thrissur	171	30	98	..	8	..	307
9	Palakkad	186	16	10	..	94	..	306
10	Malappuram	216	116	2	..	..	..	334
11	Kozhikode	141	50	15	..	1	..	207
12	Kannur	132	81	..	3	..	..	216
13	Wayanad	38	1	36	..	2	..	77
14	Kasaragod	117	175	..	..	8	..	300
Total		1641	575	264	22	414	1	2917

## APPENDIX M

**Abstract of Dealers Licence issued during the year 2006-2007  
(District-wise)**

Sl. No.	District	No. of Dealers Licence
1	Thiruvananthapuram	21
2	Kollam	78
3	Pathanamthitta	14
4	Kottayam	108
5	Idukki	21
6	Alappuzha	92
7	Ernakulam	215
8	Thrissur	58
9	Malappuram	55
10	Palakkad	21
11	Kozhikode	16
12	Wayanad	25
13	Kannur	87
14	Kasaragod	18
15	Special Office, Cherthala	..
Total		829

## APPENDIX N

**Statement showing the details of Demand, Collection and Balance 2006-2007**

Sl. No.	Name of the Lessee	Demand as on 1-4-2006	Current Demand	Total Demand for 2006-07	Total Collection for 2006-07	Waiver/ write off	Balance as on 31-3-07 5-(6+7)	Remarks
(1)	(2)	(3)	(4)	(5)	(6)	(7)	(8)	(9)
1	Kuthiathode, Limeshell Co-operative Society, Ltd., No. A-193	10417	..	10417	..	..	10417	..
2	Mattathibhagam, L. S. Co-operative Society, Ltd., No. A-190	7362	..	7362	..	..	7362	..
3	Kerala Clays and Ceramics Products	107672	800087	907759	*8304	71704	827751	*Deducted Rs. 71704 vide Pro-order No. 397/06-07/3950/D2/ 2000 dated 15-9-2006 of DMG
4	Standard Clay Mines	322696	..	322696	107565	..	215131	

## APPENDIX N (Contd.)

(1)	(2)	(3)	(4)	(5)	(6)	(7)	(8)	(9)
5	Chalakudi refractories	704	..	704	..	..	704	
6	Kerala Construction Components	1467517	..	1467517	..	..	1467517	
7	Good Luck Minerals	2680	..	2680	..	..	2680	
8	P. G. Lekshmanan	1253	..	1253	..	..	1253	
9	S. Justus	1234	..	1234	..	..	1234	
10	Chembu village Kattikunnu Kakka Vyavasaya Sangom	133464	..	133464	..	..	133464	
11	Karappuram L. S. Co-operative Society Ltd. No. A-144	249380	19304	268684	127072	..	141612	
12	Vaikom Taluk L. S. Co-operative Society Ltd., No.K-735	29018	..	29018	16260	..	12758	
13	Shepherd Granites	3563	..	3563	3563	..	..	
14	Kumarakom L.S. Co-operative Society Ltd., No. A-1782	171491	..	71491	66580	*37287	67624	*Deduct Rs. 37287 vide P.O. No.365/06- 07/1009/D2/06 dated 8-8-2006
15	Kerala Ceramic Ltd.	65457	61460	126917	65457	..	61460	
16	M. Rahim	12346	..	12346	..	..	12346	
17	Raaj Sukumaran	450413	..	450413	..	..	450413	
18	Tropical Granites	153027	23	153050	42144	..	110906	
19	T. K. Enterprises	672517	..	672517	..	..	672517	
20	Kavalam Black L. S. Co-operative Society Ltd. No. 886	15065	11153	26218	..	..	26218	
21	Suja L. Mathew	5791	..	5791	..	..	5791	
22	J. Thobias	5133	..	5133	..	..	5133	
23	A. Karunan	934	..	934	934	..	..	
24	Imperial Granites	60495	..	60495	..	..	60495	
25	Ameenammal	186398	..	186398	..	..	186398	
26	Canon Granites (P) Ltd.	17049	..	17049	17049	..	..	
27	Kaveri Chemicals	93600	..	93600	..	..	93600	
28	Yennarkey, R. Chiramjeevi Rathinam	24288	..	24288	..	..	24288	
29	A.. Rahiyanath	78968	..	78968	..	..	78968	
30	Jaya Balagangadharan	774	..	774	774	..	..	



## APPENDIX N (Contd.)

(1)	(2)	(3)	(4)	(5)	(6)	(7)	(8)	(9)
31	M/s. Travancore Cements Ltd.	586716	..	586716	95125	*78013	413578	*Rs. 586716 revised as Rs. 508703/ <i>vide</i> P.O. No.475/06- 07/189/D2 dated 18-10-2006
32	V. O. Mathew	2553	..	2553	2553	..	..	
33	C.H. Hymavathy Amma	5541	..	5541	5541	..	..	
34	K. Viswambharan	341	..	341	341	..	..	
35	Clay India	2863	..	2863	2863	..	..	
36	J. Krishnamoorthy	1900	..	1900	1900	..	..	
37	V. O. Assissi	1457	..	1457	1457	..	..	
38	C. Beena Kumari	1382	..	1382	1382	..	..	
39	G. Asokan	1791	..	1791	1791	..	..	
40	Vechoor L. S. Co- operative Society Ltd. No. 2407	24170	..	24170	24170	..	..	
41	S. Raveendran	281	..	281	281	..	..	
42	C. K. Muthalai	5744	..	5744	5744	..	..	
43	Concrete Aggregates Industries	5291	..	5291	5291	..	..	
44	Gem Granites	4159	..	4159	4159	..	..	
45	M. P. Basheer	72421	..	72421	72421	..	..	
46	P. T. Sreenivasan	4025	..	4025	4025	..	..	
47	Crescent Stone Crusher & Hollow Bricks	162	..	162	162	..	..	
48	Modern Cements Bricks	7696	..	7696	7696	..	..	
49	V. Sudhakaran	..	4132	4132	4132	..	..	
50	Jacob P. Paul	..	4424	4424	4424	..	..	
51	C. K. Asokan	..	5208	5208	..	..	5208	
52	A. Abdul Nazar	..	9164	9164	9164	..	..	
53	K. Bhuvana Chandran Nair	..	2273	2273	22673	..	..	
54	D. Suma Devi	..	112	112	112	..	..	
55	P. S. Sukumaran	..	560	560	560	..	..	
56	Standard Kaolin	..	16861	16861	16861	..	..	
57	P. K. Jaleel	..	4082	4082	4082	..	..	
58	Sree Meenakshi Stone	..	318	318	..	..	318	
59	M. A. Nazar	..	32660	32660	32660	..	..	
60	Thrissur Sand & Gravel (P) Ltd.	..	15505	15505	15505	..	..	
61	Thomson Granites (P) Ltd.	..	5945	5945	5945	..	..	

## APPENDIX N (Contd.)

(1)	(2)	(3)	(4)	(5)	(6)	(7)	(8)	(9)
62	Naffisa Beevi	..	12445	12445	12445	..	..	
63	K. V. Josekutty	..	1439	1439	1439	..	..	
64	T. K. Joseph	..	5280	5280	5280	..	..	
65	Suhura Beevi	..	2713	2713	2713	..	..	
66	M. M. Paul	..	4163	4163	4163	..	..	
67	K. R. Raveendran	..	2666	2666	..	..	2666	
68	E. L. Thomas & Yennar, R. Rajathinam	..	50	50	50	..	..	
69	C. V. Joy	..	4267	4267	4267	..	..	
70	S. Sreekumar	..	3171	3171	3171	..	..	
71	C. R. Venu	..	3581	3581	3581	..	..	
72	K.M.M.L.	..	756467	756467	756467	..	..	
73	K. P. Granite Industries	..	1721	1721	1721	..	..	
74	Santha Babu	..	9907	9907	..	..	9907	
75	P. P. Santhosh	..	4891	4891	..	..	4891	
76	Radha Clays	..	19895	19895	..	..	19895	
77	C. K. Ajith	..	5638	5638	5638	..	..	
78	Thomas Francis	..	1796	1796	1796	..	..	
79	Lagen C. Jose	..	3689	3689	..	..	3689	
80	C. K. Muthalali	..	1326	1326	1326	..	..	
81	A. M. Manzoor	..	11276	11276	..	..	11276	
82	U. I. John	..	6908	6908	6908	..	..	
83	V. O. Assissi	..	8215	8215	..	8215	8215	
84	Aby Dominic	..	1812	1812	1812	..	..	
85	K. Vasumathy	..	36120	36120	..	..	36120	
86	D. B. H. International (P) Ltd.	..	36079	36079	36079	..	..	
87	M. M. Stephen	..	1579	1579	..	..	1579	
88	Jose Thomas	..	1078	1078	1078	..	..	
89	Babu, K. Kuriakose	..	1189	1189	..	..	1189	
90	Vivish Thomas	..	9000	9000	9000	..	..	
91	M/s. J & K Granites	..	727	727	727	..	..	
92	M/s. Vechoor L. S. Co-operative Society No. 2407	..	280	280	..	..	280	
93	Eldo Kuruvila	..	1288	1288	1288	..	..	
94	N. Abdul Rehuman	..	3731	3731	3731	..	..	
95	Aryad L. S. Co- operative Society Ltd., No. 2462	..	4003	4003	..	..	4003	
96	Thycattussery L. S. Co-operative Society Ltd., No. A-239	..	9540	9540	..	..	9540	

## APPENDIX N (Contd.)

(1)	(2)	(3)	(4)	(5)	(6)	(7)	(8)	(9)
97	Marykutty Joseph	..	8048	8048	..	..	8048	
98	Muhamma L. S. Co-operative Society Ltd., No. 2551	..	3397	3397	..	3397	..	
99	T. S. Jaleel	..	8136	8136	..	8136	..	
100	Three Star Granite Industries	..	3477	3477	..	..	3477	
Total		5079199	1994259	7073458	1653002	187004	5233452	
Major Compounding			375000	375000	37500			
Minor Compounding			27938376	27938376	27938376			
Total		5079199	30307635	35386834	29966378	187004	5233452	

## APPENDIX O

## DETAILS OF TRAINING OF MANPOWER

From April 2006 to March 2007.

Name of training and Institution	Name of Officers who attended with designation and Office	Period of Training	Place of Training	Details of Fee	Head of Account
(1)	(2)	(3)	(4)	(5)	(6)
Computer Course on "Office Automation and Internet" IMG Regional Centre, Kozhikode (5399/T3/03)	1. Smt. P. C. Reshmi, Asst. Geologist, District Office, Kozhikode 2. Sri T. Mohanan, Geologist, District Office, Kozhikode 3. Smt. C. G. Sali, L.D.C., District Office, Kozhikode 4. Sri K. Sajeev Babu, L.D.C., District Office, Palakkad 5. Sri A. K. Manoj, Asst. Geologist, District Office, Palakkad 6. Sri K.V. Nazar Ahammed, Geologist, District Office, Thrissur 7. Sri K.V. Bahanan, M.R.I., District Office, Thrissur 8. Sri T. K. Ramakrishnan, Geologist, District Office, Wayanad 9. Sri K. K. Mani, L.D.C., District Office, Wayanad 10. Sri A. Muhammed Kunhi, Geologist, District Office, Kasaragode	8-5-2006 to 19-5-2006	IMG Regional Centre, Kozhikode	Rs. 37500 (Rs. 2500 per Candidate)	"2853-02- 102-99-Plan- MI-34 OC".

## APPENDIX O (Contd.)

(1)	(2)	(3)	(4)	(5)	(6)
	11. Sri E.K.Chandran, L.D.C., District Office, Kasaragode				
	12. Sri P. Raghavan, Sr. Geologist, District Office, Malappuram				
	13. Sri N. V. Radhakrishnan, L.D.C., District Office, Malappuram				
	14. Smt. K. K. Chithra, U.D.C., District Office, Kannur				
	15. Sri A. Gopinathan Nair, Asst. Geologist, Directorate				
The Institute of Engineers (India) Andrapradesh State Centre-18 <sup>th</sup> National Convention of Mining Engineers and National Seminar on "Emerging Trends in the Mining Industry" Oppertunities issued and challenges (6883/T1/2006)	Sri A. Prabhakumar, Geologist	27 <sup>th</sup> and 28 <sup>th</sup> October, 2006	Institution of Engineers (India) Andra- Pradesh, Hyderabad	Rs. 1500	"2853-02- 102-99-Plan- MI-34 OC".
Training on Right to Information Act IMG, TVPM (4949/T3/06)	1. Sri C. Vasudeva, Deputy Director, Directorate 2. Sri. Baby Varghese, Geologist, District Office, Idukki 3. Sri Thomas Joseph, Geologist, District Office, Palakkad 4. Sri P. Raghavan, Sr. Geologist, District Office, Kannur	23-24 January, 2007 7-8 February, 2007 12-13 March, 2007 "	IMG TVPM IMG TVPM IMG Regional Centre Kozhikode "	.. .. .. ..	.. .. .. ..
6 <sup>th</sup> course on Remote Sensing and GIS for mineral exploration GSITI, Hyderabad (8865/T3/06)	Sri Biju Sebastian, Geologist, Directorate	22-1-2007 to 6-4-2007	GSITraining Institute Hyderabad	.. ..	.. ..
Training Programme on "Administrative Vigilance" IMG, TVPM (9797/T3/06)	1. Sri K. Sreekantan Nair, Administrative cum Accounts Officer, Directorate 2. Sri C. Balaraman, Sr. Geologist, Directorate	18-20 January, 2007 "	IMG TVPM "	.. ..	.. ..
Management Deve- lopment programme to Finance Officers/ Administrative Officers of Govt.Secretariat IMG, TVPM (8478/T3/06)	Smt. A. Rajakumari, Administrative Officer Directorate	3-9 January, 2007	IMG TVPM	.. ..	.. ..

## APPENDIX O (Contd.)

(1)	(2)	(3)	(4)	(5)	(6)
'Diploma in Gemmology' Gem Testing Lab, Jaipur (3807/T3/07)	1. Sri N. R. Krishnendu Asst. Geologist, Directorate 2. Smt. Priya Mohan, Asst. Geologist, Directorate	27-4-2006 to 3½ months	Gem Testing Lab, Jaipur	Rs. 30000 (Rs. 15000 per Candidate)	"2853-02-003-99-Plan-Training of Personal"
One day symposium entitled 'Need for better Natural Resources Management for Kerala' Kerala State Land Use Board, Thiruvananthapuram (5603/T3/08)	1. Sri A. Prabhakumar, Geologist, Directorate 2. Sri Biju Sebastian, Geologist, Directorate	28-7-2006	Science and Technology Museum, Thiruvananthapuram	..	..
Training on "Microwave Remote Sensing and Application" Conducted by IIRS Dehradun (555/T3/07)	Dr. A. N. Manoharan, Asst. Geologist, Directorate	12-16 February, 2007	Indian Institute of Remote Sensing, Dehradun	..	..
Training on "Malayalam as official language" IMG, Thiruvananthapuram (6494/T3/06)	1. Sri E.K.Chandran, L.D.C., District Office, Kasaragode 2. Sri K. Sajeev Babu, L.D.C., District Office, Palakkad 3. Smt. C. G. Sali, L.D.C., District Office, Kozhikode 4. Sri P. Ahammed Rasheed, U.D.C., District Office, Wayanad 5. Smt. K.K. Chithra, U.D.C., District Office, Kannur 6. Sri N.V. Radhakrishnan, L.D.C., District Office, Malappuram	27-11-2006 to 1-12-2006 4-8 December 2006 11-15 December, 2006 11-15 December, 2006 5-9 March, 2007	IMG Regional Centre, Kozhikode IMG Regional Centre, Kozhikode IMG Regional Centre, Kozhikode IMG Regional Centre, Kozhikode IMG Regional Centre, Kozhikode IMG Regional Centre, Kozhikode	..	..
10th meeting of Granite development Council	Sri K. L. Krishnamoorthy, Additional Director & Director (In-charge)	..	Bangalore	..	2853-02-102-99-Plan-MI-34-OC.

Director of Mining and Geology